

DERBYSHIRE JOINT AREA PRESCRIBING COMMITTEE (JAPC)

Guidelines for the prescribing of Stoma Accessories

New stoma patients will be discharged from hospital with at least 2 weeks supply of products.

They will have contact with a Specialist Stoma Nurse within 7 working days of discharge, who will manage the patient's product requirements until they become stable.

The nurse will support the patient to decide on the most appropriate supply route for their appliance products; Community Pharmacy, Dispensing GP or Dispensing Appliance Contractor (DAC).

- Chesterfield Royal Hospital (CRH):**

On discharge all new stoma patients are given a choice dependent on co-morbidities, mobility, access to transport etc., to receive post-operative follow up care either by a community stoma care nurse attached to a DAC or to be seen by the stoma care team in the outpatient department at CRH.

For the first 4-6 weeks the patients' stoma requirements may change as the healing process continues and prescriptions within this time will be requested according to need.

- University Hospitals of Derby and Burton (UHDB):**

Once the patient is home specialist community nurse (SCN) will assess in the first 6 weeks the patient's requirements and prescriptions will be requested according to need. If unusual /exceptional circumstances where additional products are required SCN will contact GP directly.

Stoma bags (pouches), flanges or belts need to be individually tailored and hence cannot be included in a formulary. For these prescriptions, **GP practices should check the quantities being requested are reasonable as follows:**

Appropriate Quantities and use for stoma items (table1)

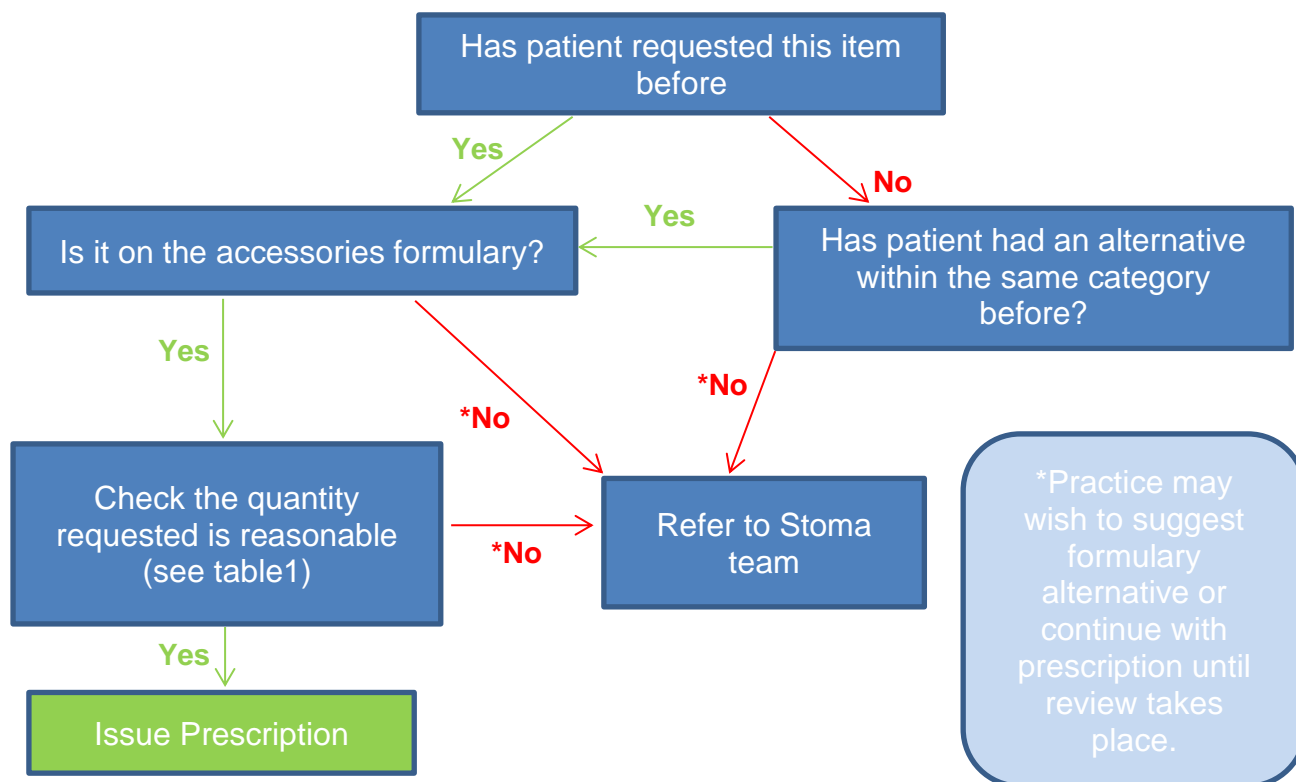
Appliance	Quantity per month	Prescriptions directions	Normal Usage	Notes
Colostomy bags	30-90 bags	Remove and discard after use.	1 – 3 per day	Not re-usable. Can be 1 or 2 piece.
Ileostomy bags	10-30 bags	Drain as required. Use new bag every 1-3 days.	1 every 1 to 3 days	Drainable. Can be 1 or 2 piece.
Urostomy bags	20-30 bags	Drain as required. Use new bag every 1-3 days.	1 every 1 to 3 days	Drainable. Can be 1 or 2 piece. Require additional night bag.
Night drainage bags	4 bags (1 box of 10 bags every 2-3 months)	Use a new bag every 7 days.	1 per week	Drainable. Rinse as directed by stoma care nurse.
Flange (for 2 piece system)	15 flanges	Change every 2-3 days.	1 every 2 to 3 days	The flange is not changed at every bag change.
Bag Belts – correct according to product	3-6 per year	Usage may vary	variable	Washable and re-usable

Stoma Accessories Formulary

The Specialist Stoma Nurses have devised a limited formulary for stoma accessories: these are regarded as clinically and cost-effective choices (see page 4).

All new patients will be assessed for their product needs within the first year, the most significant changes to product use would be in the first 6 weeks. After one year product use would only be altered if medical need or circumstance change.

Flow chart for requests for stoma products on prescription



If it is decided to stop prescriptions for specific accessories, the following statement may help explaining this to patients:

"Our overall aim in prescribing stoma appliances is to provide the best products for each individual patient to avoid sore skin and prevent other problems developing with a stoma. Stoma patients will be supplied with products that are necessary and appropriate. National NHS guidance states that some products should not be routinely recommended: these include deodorants, skin washes, bag covers and underwear. These products will not be supplied unless agreed as being essential by your stoma nurse (or GP). Derbyshire ICB has to make best use of limited NHS resources and so follows this guidance and would expect patients to fund these items themselves."

Source: PrescQIPP guidance on prescribing stoma appliances in General Practice

Stoma Nurse Contact Details:

Practices may refer patients to the Stoma Nursing Team, or patients may self-refer:

Derby Stoma Care Department: off Ward 309, Royal Derby Hospital, Uttoxeter road, Derby DE22 3NE
Office number: 01332 787465

CNS:

Sister Heather Stevenson 07469 037442

Sister Lisa Cockram 07500 976515

Sister Claire Flanagan 07384 903336

Sister Marie Buckley 07823 373874

Chesterfield Royal Hospital Stoma Care Team: Calow, Chesterfield, S44 5BL
01246 512715

Lead CNS: Katy Timms 07920 411875

Product groups which should not be supplied on prescription:

- Stoma Deodorisers (unless use explicitly advised by stoma nurses)
- Skin cleansers and washes (baby wipes suffice)
- Stoma collars, stoma filters
- Liquid or aerosol adhesives
- Lubricants
- Gauze swabs
- **Stoma underwear** will not be routinely prescribed. However hernia prevention wear or management of hernia (support wear) will be prescribed on an individual basis – after specific measurement of requirements by the Stoma Care Nurse
 - Prevention – where clear risk identified = 2 garments per year
 - Actual herniation – 3 garments per year

NHS Derbyshire-wide Stoma Accessories Formulary

Derbyshire Stoma Accessories Formulary

	Pack size and price (correct July 2021)		Comments	Quantity per month
Medical adhesive removers – either sprays or wipes, should be on repeat prescription, not both				
Sprays: Peel adhesive remover spray (Apple /Blackberry /Mint / Neutral) MRW2	50ml	£6.90	For patients self-conscious of odour	3 – 6 cans per month should cover the majority of patients
Dansac EasiSpray 083-01	50ml	£6.84	For patients who have difficulty depressing canisters	
Brava adhesive remover spray XL 12012	75ml	£10.05	50ml Brava adhesive remover spray 12010 is not a cost effective choice and non-formulary	
Salts adhesive remover spray WAP	50ml	£6.91	Fragranced Chesterfield choice	
Wipes: Salts adhesive remover wipes WAP2	30 wipes	£9.01	For use whilst travelling/ in work etc.	Acute issues only
Clear adhesive remover sachets MRW1	30 wipes	£9.61		If on repeat prescription, 1 wipe per bag change.
Skin barrier products – either sprays or wipes should be prescribed, not both				
Sprays: Medi Derma-S non-sting medical barrier film pump spray 60796	30ml	£5.35	May be needed to prevent skin breakdown, e.g. fat recesses, chemo pts, as well as help heal broken/weeping skin	1 – 2 issues per 30 colostomy/60 ileostomy bags
Guard non-sting barrier film RMC5	50mls	£11.22		

Sensi-Care sting-free barrier spray	28mls	£5.87	Chesterfield formulary choice (in preference to wipes)	
Wipes: Medi Derma-S non-sting medical barrier film wipes 60307	30 wipes	£19.40 (65p/wipe)	More suitable for patients with arthritis	1 wipe a day
Guard Non Sting protective skin barrier film sachets RMC3	30 x 3ml sachets	£21.88	Good for patients with concurrent eczema. Lavender fragrance	1 wipe a day
Secura Protective wipes 66800712	50 wipes	£24.27	Chesterfield choice	1 wipe a day
Independence Fusion applicator BW2	5 x 3ml	£8.28	For problematic stomas and fistulae only when specifically requested by the Stoma Nurse specialists	
Skin protection powders and pastes – acute issue only				
Renew protective powder with aloe vera ABP2	50g	£5.08		For weeping or broken skin.
Brava Ostomy powder 1907 (Coloplast Ltd)	25g	£2.53	Chesterfield choice	One pack every 3 – 6 months
Orahesive powder (ConvaTec Ltd) S106	25g	£2.59		
Orabase paste (ConvaTec Ltd) S103	30g	£2.23		Absorbs moisture; skin filler. One tube every 3 – 6 months.
Barrier creams				
Guard barrier cream RMC1	60g	£5.16		
Paste: useful in high output ileostomies, aids adhesion. A good seal will prevent seals and bags being replaced more frequently				
Stomahesive paste S105 (ConvaTec Ltd)	60g	£8.07	Acts as a barrier as well as adhesive	At stoma nurse's discretion
Ilex skin protectant paste IP51	57g	£8.56	Ideal for ileoanal pouches/ stoma granulomas	
Brava paste 12050 (Coloplast Ltd)	60g	£6.63	Chesterfield choice	
Flange extenders / security strips: Manufacturer needs to match that of the bag				
Brava elastic tape 12070 (Coloplast Ltd)	Box 20	£13.79		For extra security if patient has hernia or skin creases.
DuoDERM Extra Thin	5cm x 10cm 7.5cmx7.5cm 10cm x 10cm 15cm x 15cm	Various	Can be used over a wound – protect and seals. Ideal for stomas close together	Used at every pouch change.
OstoMart Astoa adhesive flange extenders Large AFEL30 Small AFES30 Wide AFEW30	30 per box	Various	Chesterfield formulary choice	2 tapes per bag change
Seals: For skin protection, filling in dips around the stoma, and for increasing bag use time. Usually for ileostomies / urostomies.				

Varimate Retention strips VMT 0311 Adhesive wedges large VMW40 Adhesive wedges small VMW60	Various	Various sizes		
Hyperseal washer with Manuka honey (CliniMed Ltd)	Various	Various sizes		Approx 90% of urostomy and ileostomy patients will require this 1 seal/wafer required at each pouch change
Brava Protective seal	Box 30	Various sizes		
Brava mouldable rings	Box 30	Various sizes		
Dansac GX-tra seals	Box 30	£45.39	Chesterfield choice	
Adapt barrier rings (Hollister Ltd)	Box 10	Various sizes and specifications	Chesterfield choice	
Pouch Clips - rarely needed. Usually for older bags/ 2 piece systems				
Ostomy clip S207 Beige (ConvaTec Ltd)	Box of 10	£3.69		1 pack a year
Ostomy curved clip S202 (ConvaTec Ltd)	Box of 10	£6.54		
Absorbent sachets / capsules				
Gel-X capsules Gel-X (Oakmed Ltd)	140 per box	£16.25		To thicken up contents in stoma pouch without need for medication 1 – 2 capsules per effluent 2 boxes per month

References / Acknowledgements

This guideline has been developed in consultation with the specialist stoma nurses from Chesterfield Royal Hospital and University Hospitals of Derby and Burton and is adapted from NHS Wiltshire ICB Stoma Appliances Guideline and Formulary.

Updates/Changes	Date
Contact details updated for Chesterfield Stoma Care Team pg.2	October 2021
LaVera barrier cream 100g discontinued - removed	August 2023
Oakmed stoma powder has been discontinued - removed	October 2023
Gel-X tablets discontinued - removed	December 2023